

CLASSICAL FLAGSTONES

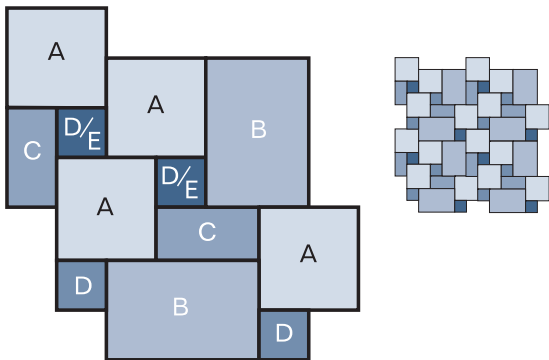
Internal Stone Flooring and Tiling

Laying Patterns

1

Classical Roman Opus

A random laying pattern made up of 4 (or 5) stone sizes.



Size guide:
For Aegean Cream:

A = 4 x	406 x 406
B = 2 x	610 x 406
C = 2 x	200 x 406
D = 4 x	200 x 200

1.44m² per module/pattern

For Desert Ochre:

A = 4 x	400 x 400
B = 2 x	400 x 600
C = 2 x	200 x 400
D = 2 x	200 x 200
E = 2 x	197 x 197

1.44m² per module/pattern

For Cathedral and Minster:

A = 4 x	550 x 550
B = 2 x	550 x 825.5
C = 2 x	273.5 x 550
D = 4 x	273.5 x 273.5

2.72m² per module/pattern

For Chenzira, Cosenza, Jerusalem Cream,
Jerusalem Grey/Gold (brushed), Pearl, Safiya,
and Windsor Gold:

A = 4 x	400 x 400
B = 2 x	600 x 400
C = 2 x	200 x 400
D = 4 x	200 x 200

1.44m² per module/pattern

For Grande Provence:

A = 4 x	808 x 808
B = 2 x	808 x 1220
C = 2 x	404 x 808
D = 4 x	404 x 404

5.89m² per module/pattern

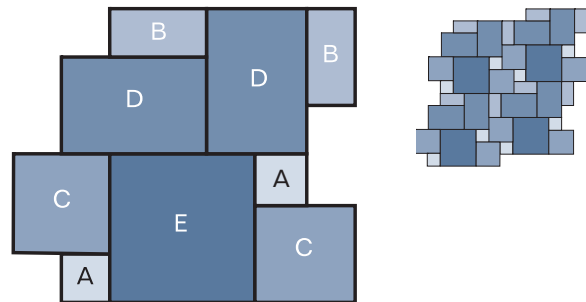
For Savannah and Silver Travertine:

A = 4 x	406 x 406
B = 2 x	610 x 406
C = 2 x	203 x 406
D = 4 x	203 x 203

1.48m² per module/pattern

Classical Opus

A random laying pattern made up of 5 stone sizes.



Size guide:

For Byzantine, Jerusalem Gold (tumbled),
Jerusalem Grey/Gold (tumbled) and
Ephrata Gold:

A = 2 x	200 x 200
B = 2 x	200 x 400
C = 2 x	400 x 400
D = 2 x	400 x 600
E = 1 x	600 x 600

1.4m² per module/pattern

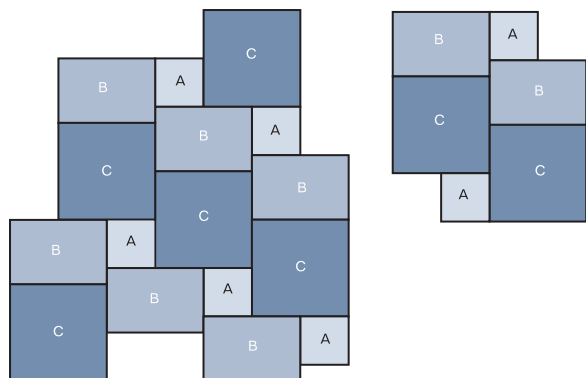
For Travertine Classic (filled) and Travertine
Ivory (filled):

A = 2 x	203 x 203
B = 2 x	203 x 406
C = 2 x	406 x 406
D = 2 x	406 x 610
E = 1 x	610 x 610

1.44m² per module/pattern

Classical 3-way Opus

A random laying pattern made up of 3 stone sizes.



Size guide:

Nero slate, Oyster quartzite, Rustic Black slate,
Rustic Grey slate, Rustic Multi-colour slate:

A = 1 x	300 x 300
B = 1 x	600 x 400
C = 1 x	600 x 600

0.69m² per module/pattern

CLASSICAL FLAGSTONES

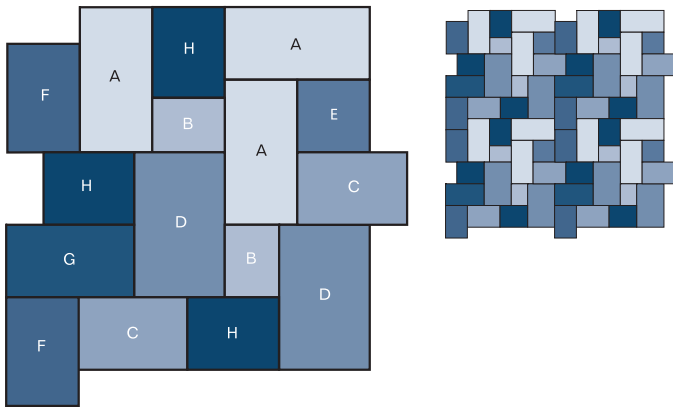
Internal Stone Flooring and Tiling

Laying Patterns

2

Classical Versailles Opus

A random laying pattern made up of 8 stone sizes.



Size guide:

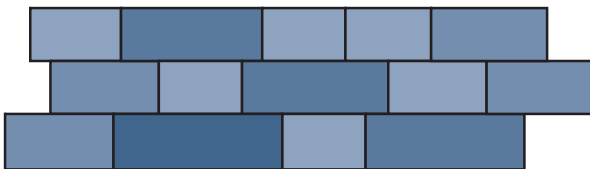
For Saint Benedict Antique:

A = 3 x	400 x 806
B = 2 x	300 x 400
C = 2 x	400 x 606
D = 2 x	500 x 806
E = 1 x	400 x 400
F = 2 x	400 x 603
G = 1 x	400 x 706
H = 3 x	400 x 500

4.02m² per module/pattern

Set width x random length

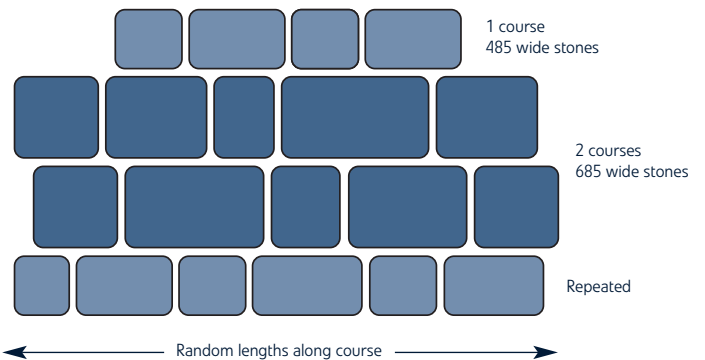
A random laying pattern made up of courses of even widths and random lengths.



All dimensions in millimetres. Drawings are not to scale.

485/685 x random length

A random laying pattern made up of 8 stone sizes of two widths and random lengths. This is to give a guide of the layout and in no way reflects the number or sizes of stones in the mix.



450/610 x random length

A random laying pattern made up of 28 stone sizes of two widths and random length.

This is to give a guide of the layout and in no way reflects the number or sizes of stones in the mix.

